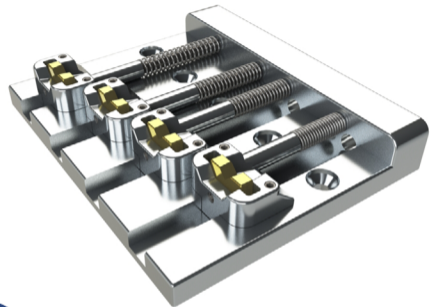


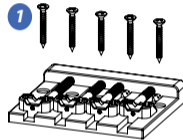
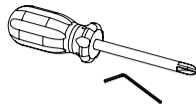
The New Tradition Starts Here



Thank you for choosing the **Hipshot® KickAss™** for your bass. Designed with unprecedented adjustability and customization of tone, it will bring new dimensions to your playing.

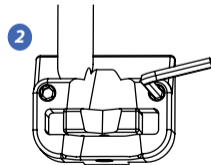
Required Tools:

- #2 phillips screwdriver
- .050" hex key (included)

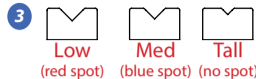


Install the bridge on your bass using the supplied screws.

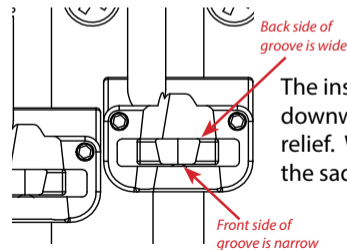
Note: The hole pattern of the KickAss™ is designed to retrofit a traditional 5 hole mount. Please compare your bass to the dimensional drawing at www.HipshotProducts.com.



String up your bass then adjust your string height by turning the height adjust screws with the included hex key. Be sure to adjust both screws the same amount.

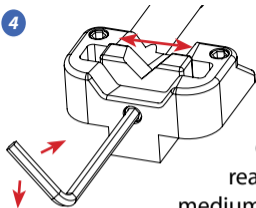


There are 3 different inserts included with the KickAss™. Low inserts have red spots and are installed on the 3rd & 4th strings. Med inserts have blue spots and are installed on the 1st & 2nd. Tall inserts are also included to give greater range of height adjustment.



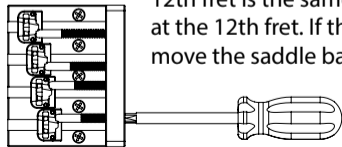
The insert groove has a slight downward angle for string relief. When installed correctly, the saddle groove should flare out in the back (as shown).

4



To adjust your string spacing, loosen the small screw on the front of your saddle and slide the insert left or right. Once your desired position is reached, tighten the screw with medium pressure (don't overtighten).

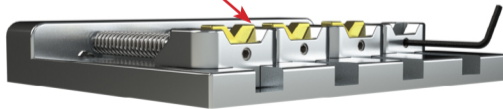
5



Use the #2 screwdriver to adjust intonation forward and backward checking that the fretted pitch at the 12th fret is the same as the harmonic pitch at the 12th fret. If the fretted pitch is sharp, move the saddle backward. If the fretted pitch is flat, move the saddle forward.

Sculpt your own tone with KickAss replacement inserts!

Your KickAss™ comes with brass inserts which promote the fundamental overtone and leads to a darker sound.



Check out stainless steel inserts which promote harmonic overtones and leads to a brighter sound. (Available at your dealer)



Or make your own inserts from wood, plastic, bone or whatever!

